

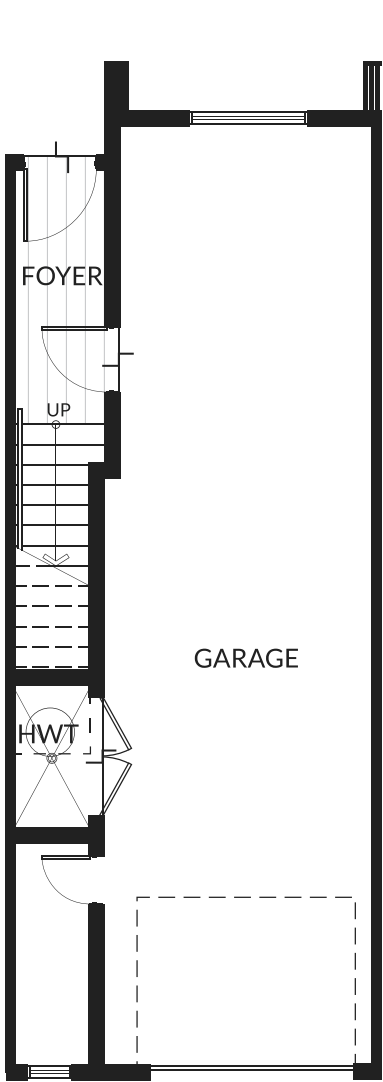
FLOORPLAN B

3 bed | 3 bath  
Livable: 1,463-1,517 sqft  
Patio: 93-100 sqft  
Balcony: 56 sqft  
Rooftop: 428-455 sqft  
Total Excl. Garage: 2,019-2,199 sqft

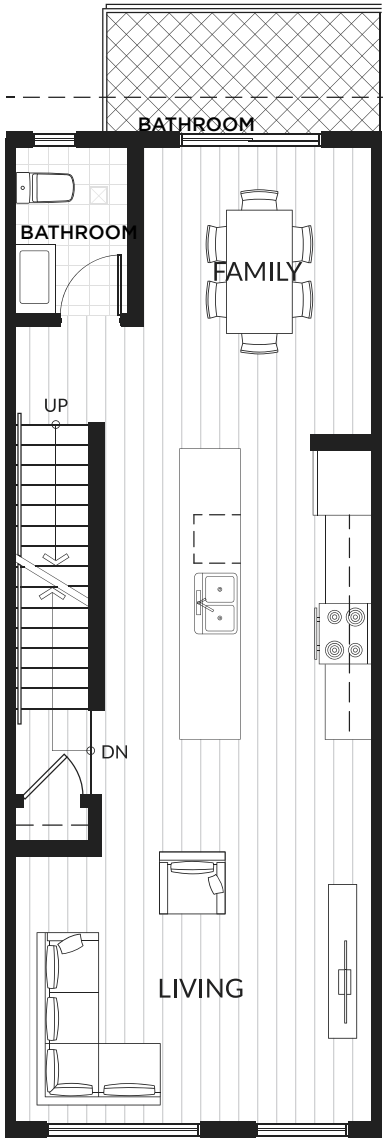


TH7	TH8
TH6	TH9
TH5	TH10
TH4	TH11
TH3	TH12
TH2	TH13
TH1	TH14
	TH15

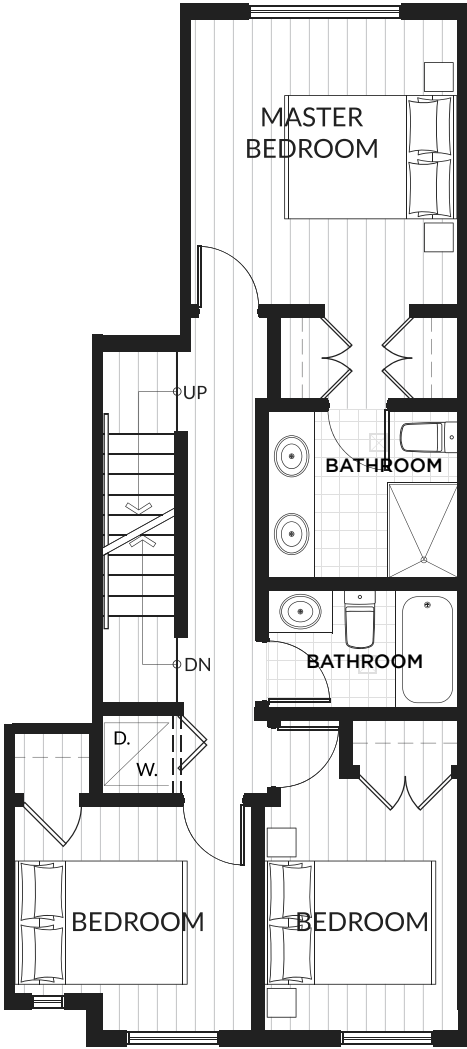
▲ NORTH



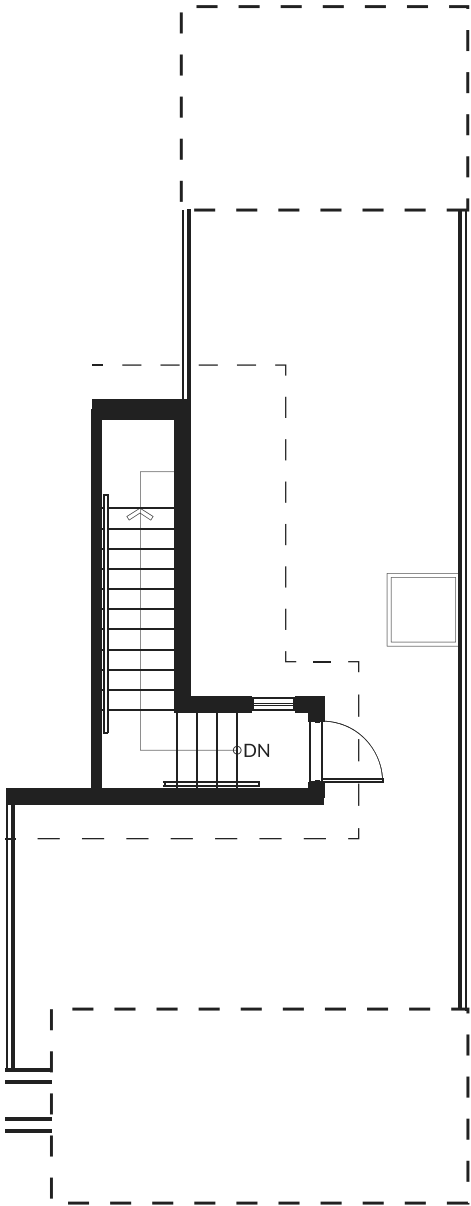
Level 1



Level 2



Level 3



Level 4

The developer reserves the right to make changes and modifications to the information contained herein. Floorplans and floorplates are subject to change without notice. Please contact a developer sales representative for details. This is not an offering for sale, as an offering can only be made after the filing of a disclosure statement, and only in jurisdictions where qualified in accordance with applicable local laws. E.&O.E.